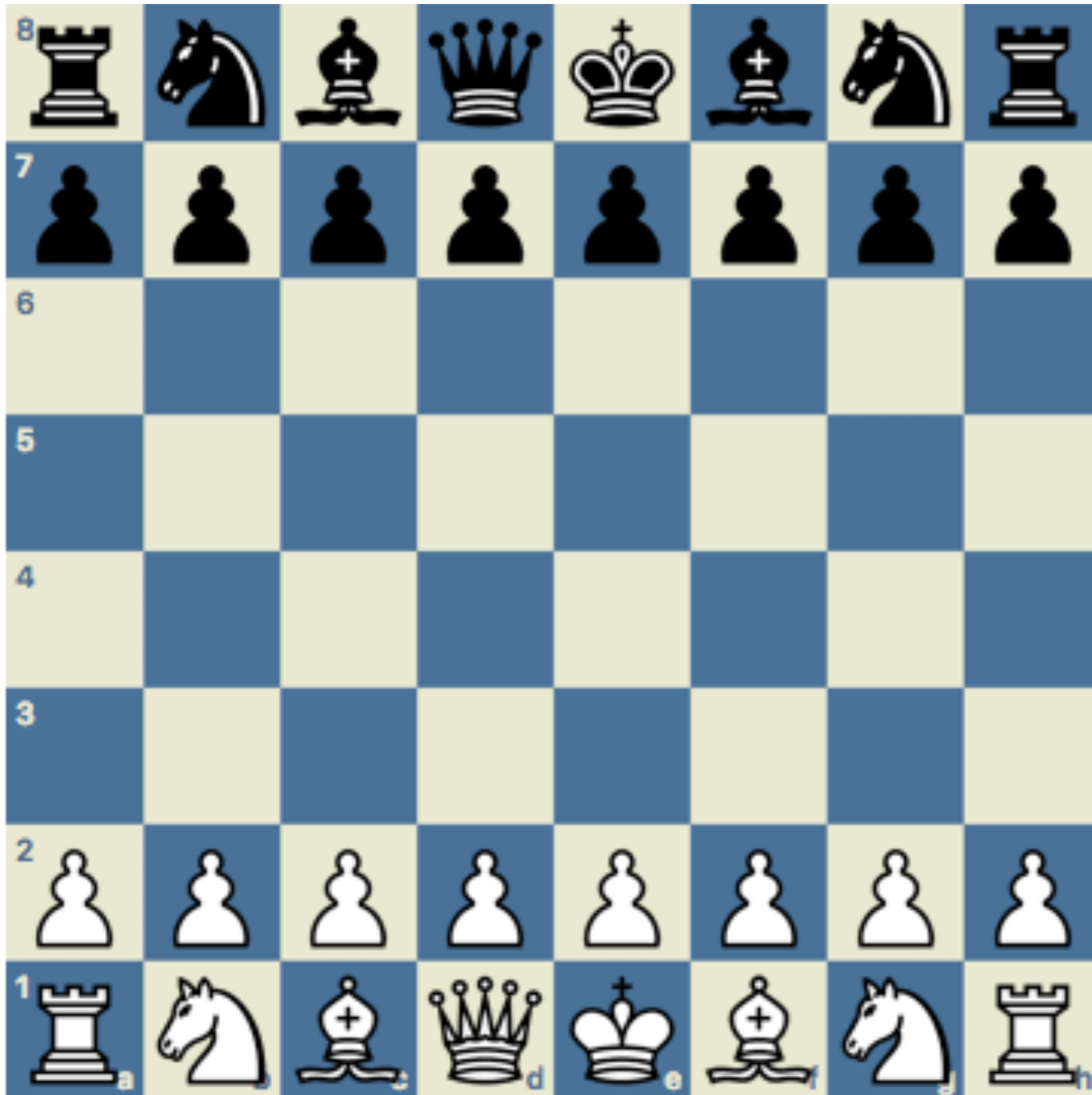


Chess

Opening Moves



RUY LOPEZ

This opening was invented sometime in the 1400 by someone who had a name called Ruy lopez.



RUY LOPEZ

This opening was invented sometime in the 1400 by someone who had a name called Ruy lopez.



RUY LOPEZ

This opening was invented sometime in the 1400 by someone who had a name called Ruy lopez.



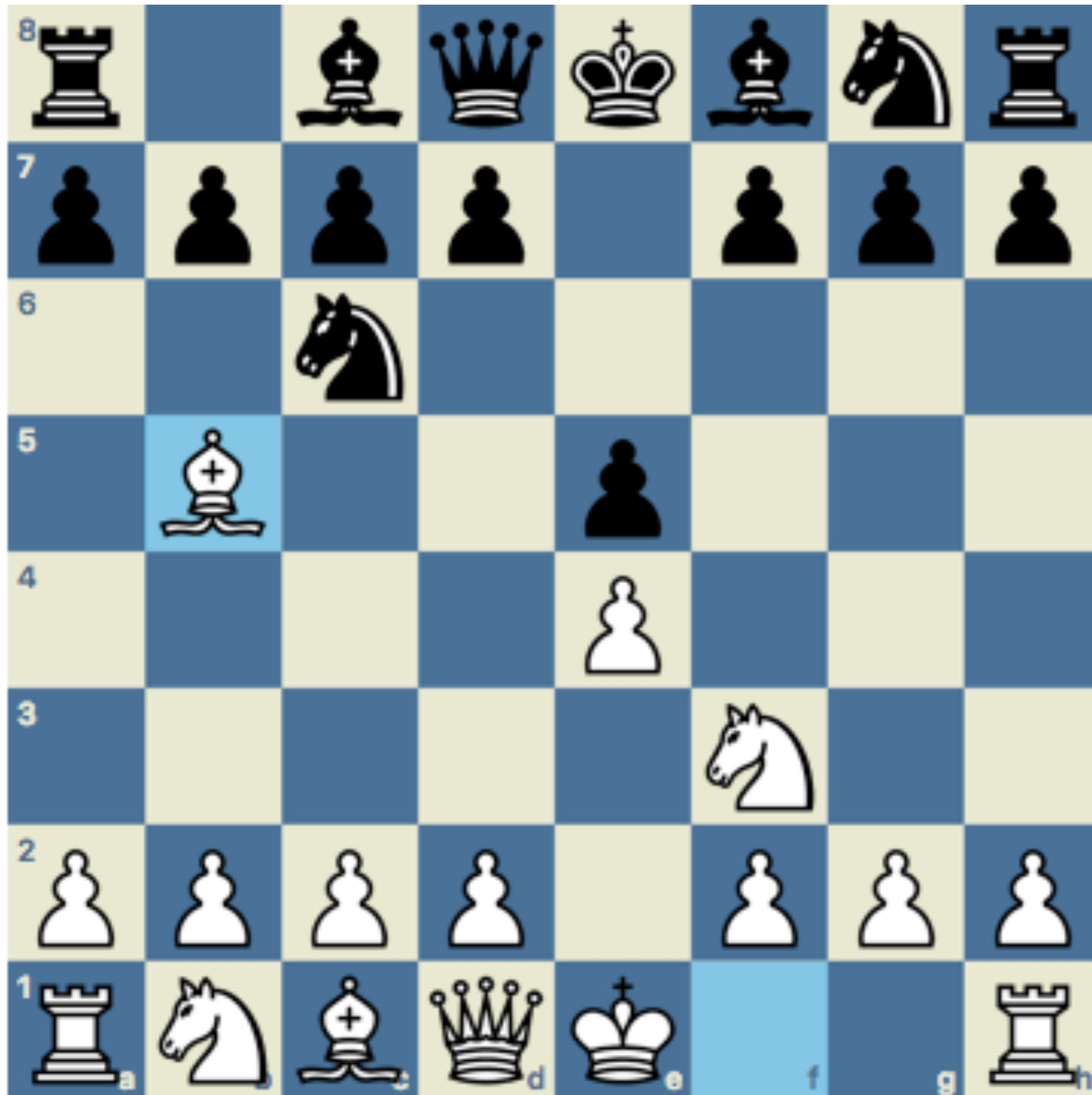
RUY LOPEZ

This opening was invented sometime in the 1400 by someone who had a name called Ruy lopez.



RUY LOPEZ

This opening was invented sometime in the 1400 by someone who had a name called Ruy lopez.

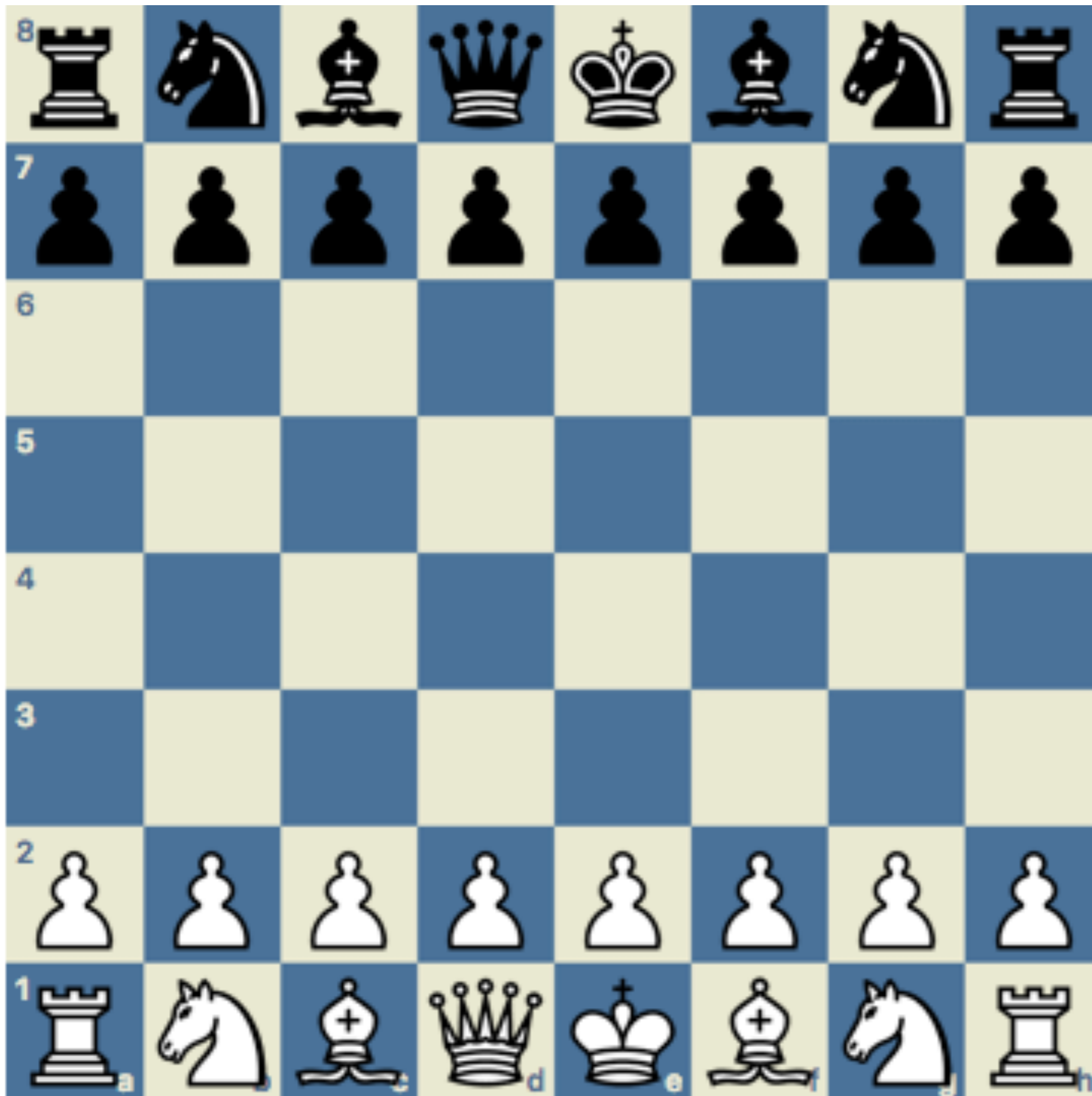


RUY LOPEZ

This opening was invented sometime in the 1400 by someone who had a name called Ruy lopez.

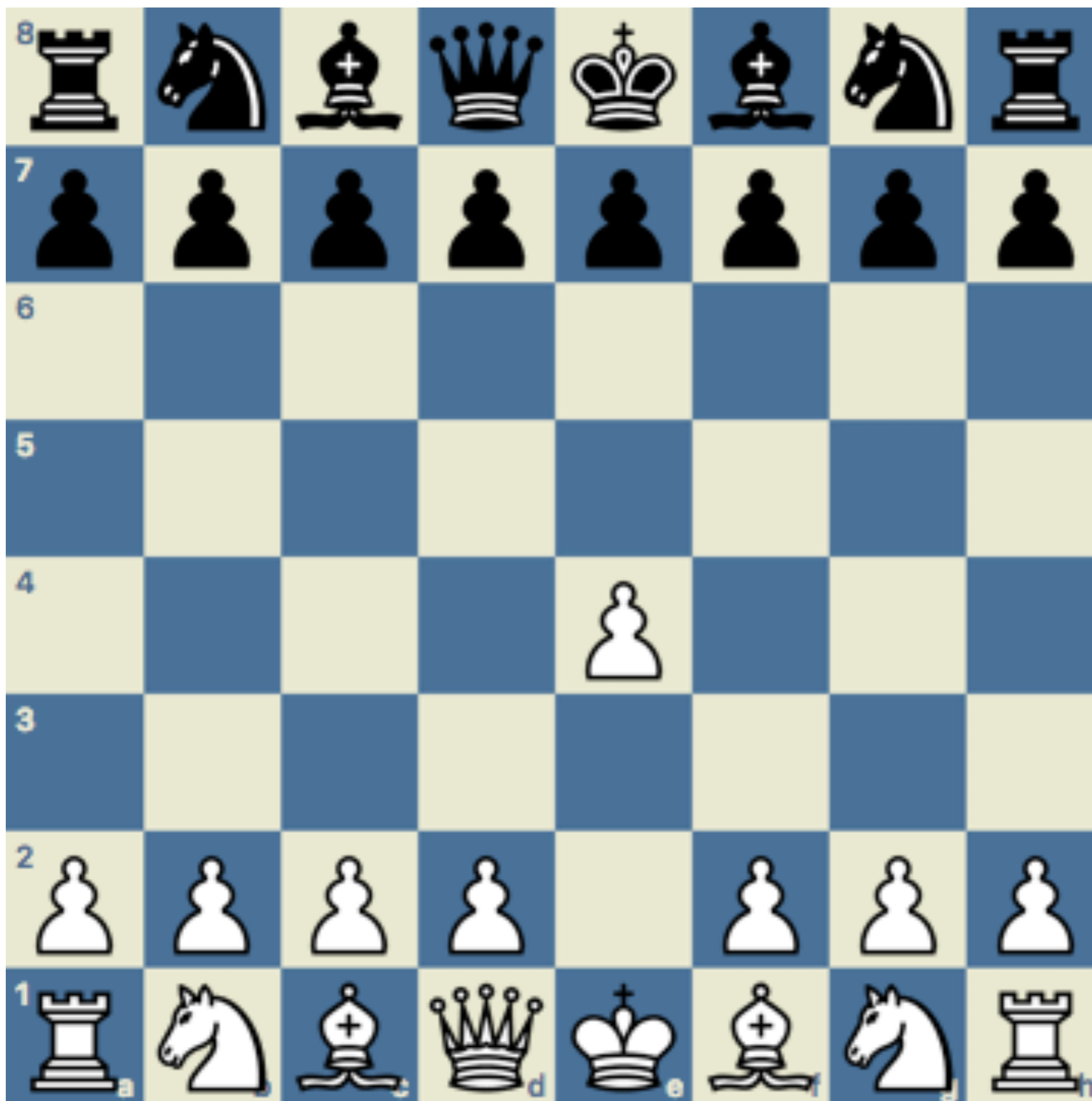
SICILIAN DEFENCE

This opening was discovered and analyzed in 1604 extending to the early 1800s.



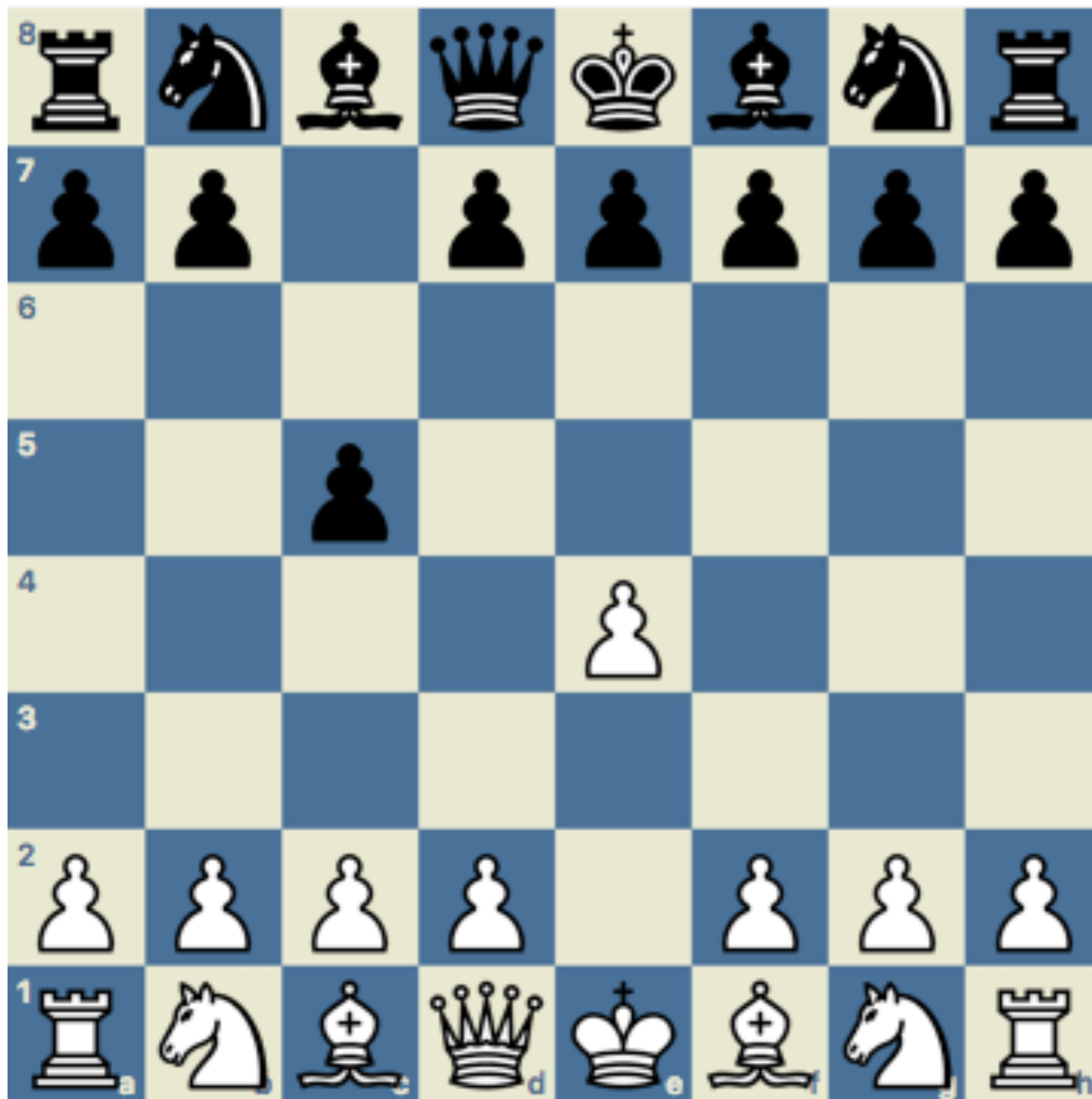
SICILIAN DEFENCE

This opening was discovered and analyzed in 1604 extending to the early 1800s.



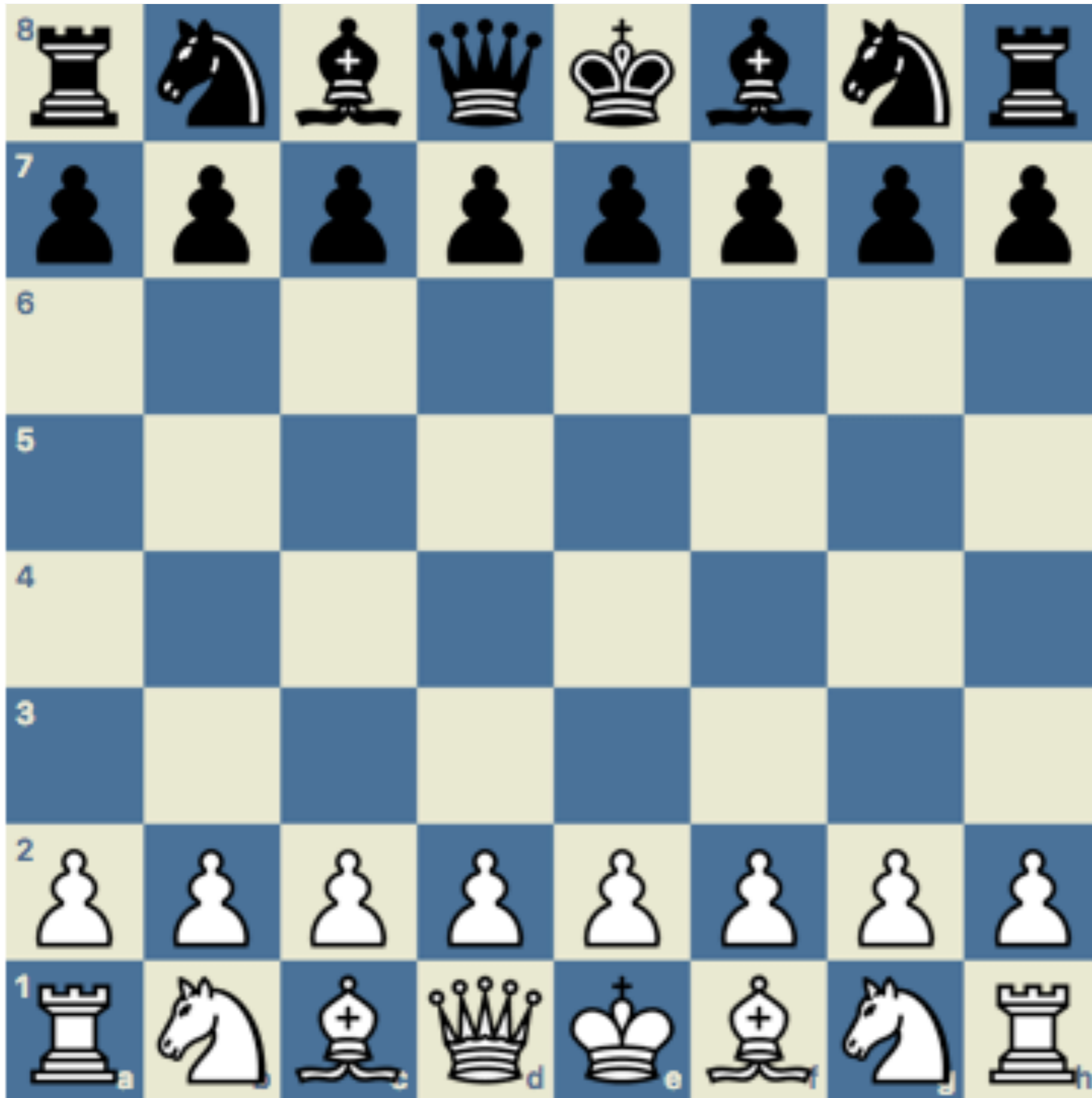
SICILIAN DEFENCE

This opening was discovered and analyzed in 1604 extending to the early 1800s.



THE QUEEN'S GAMBIT

White sacrifices a pawn for rapid development and usually gets his pawn back! This opening has a very old history going back to 1490 (probably even older) and its mentioned in a very old script called Gottingen manuscript. One of the oldest chess scripts of all.



THE QUEEN'S GAMBIT

White sacrifices a pawn for rapid development and usually gets his pawn back! This opening has a very old history going back to 1490 (probably even older) and its mentioned in a very old script called Gottingen manuscript. One of the oldest chess scripts of all.



THE QUEEN'S GAMBIT

White sacrifices a pawn for rapid development and usually gets his pawn back! This opening has a very old history going back to 1490 (probably even older) and its mentioned in a very old script called Gottingen manuscript. One of the oldest chess scripts of all.



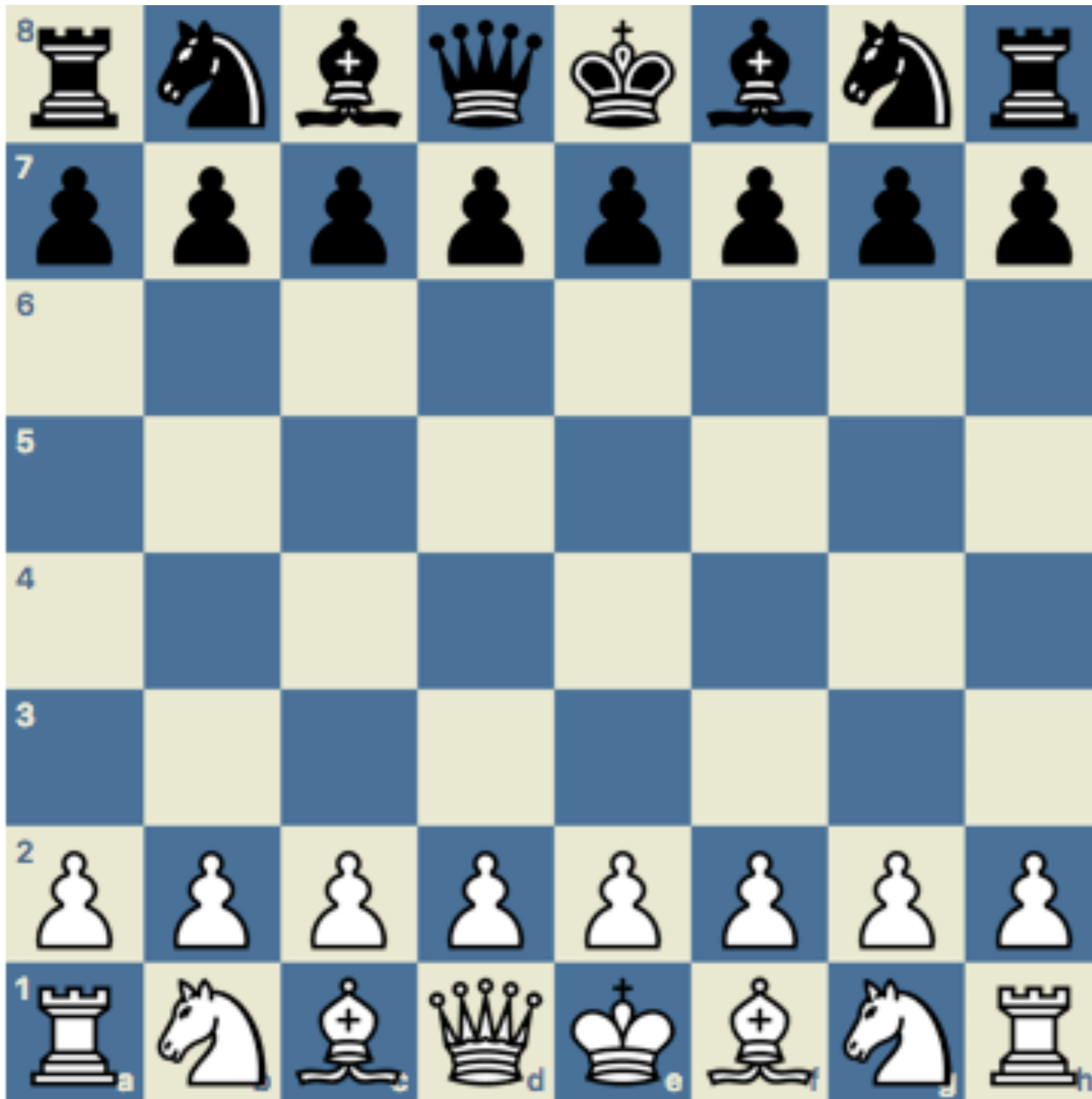
THE QUEEN'S GAMBIT

White sacrifices a pawn for rapid development and usually gets his pawn back! This opening has a very old history going back to 1490 (probably even older) and its mentioned in a very old script called Gottingen manuscript. One of the oldest chess scripts of all.



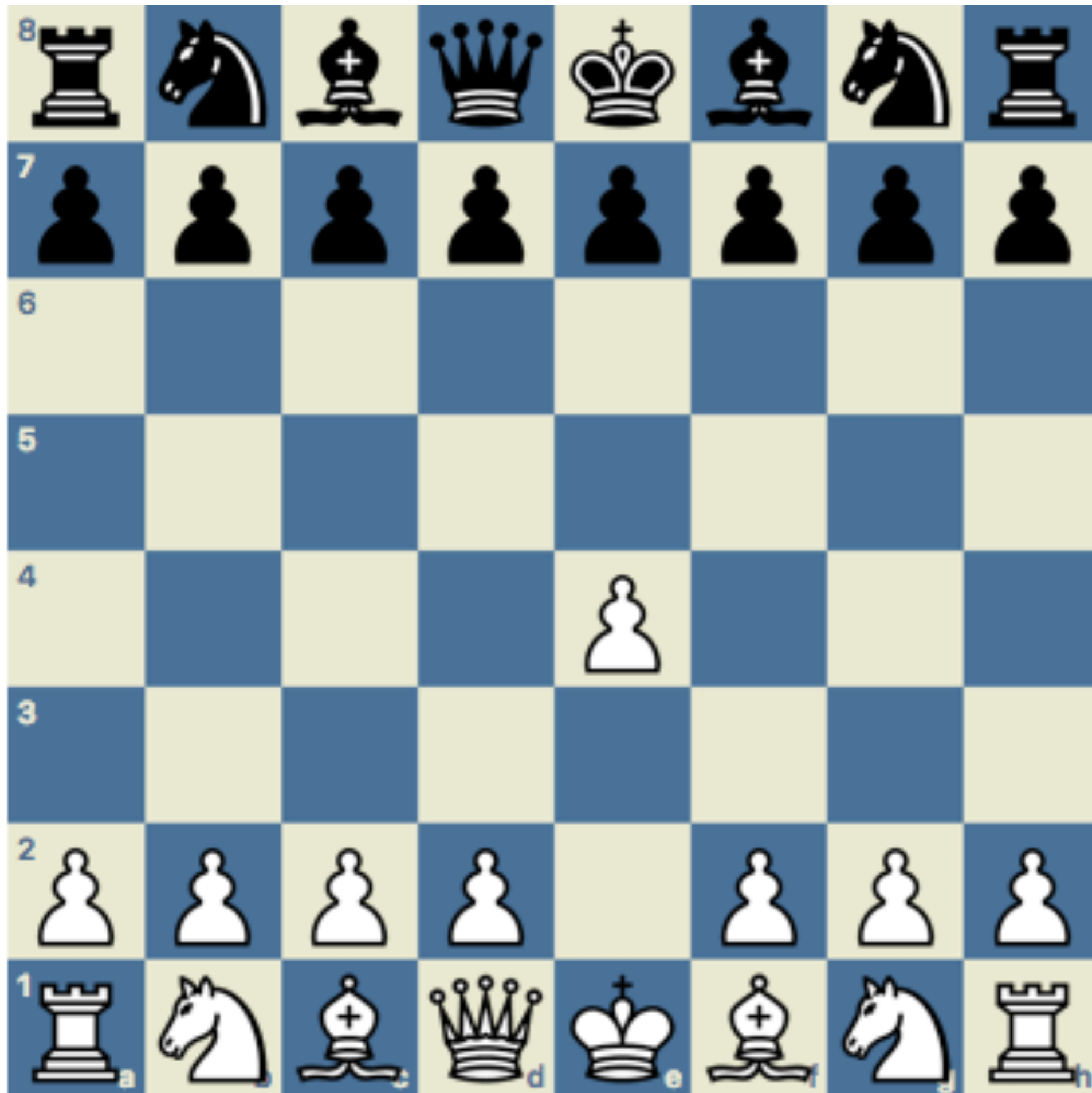
THE ALEKHINE DEFENCE

Obviously it was
invented by Alekhine
in 1921. A opening
which leads to many
transpositions.



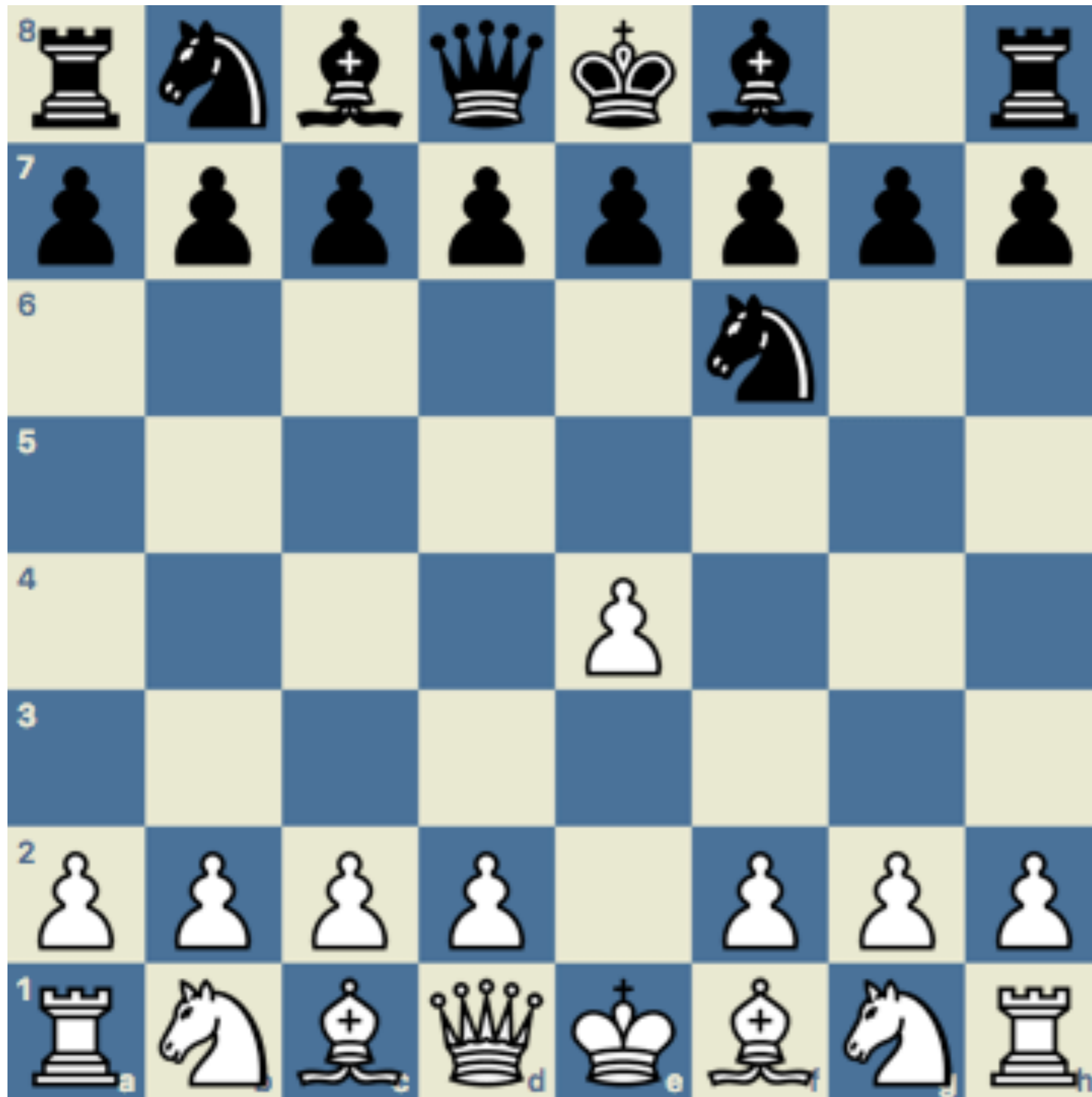
THE ALEKHINE DEFENCE

Obviously it was
invented by Alekhine
in 1921. A opening
which leads to many
transpositions.

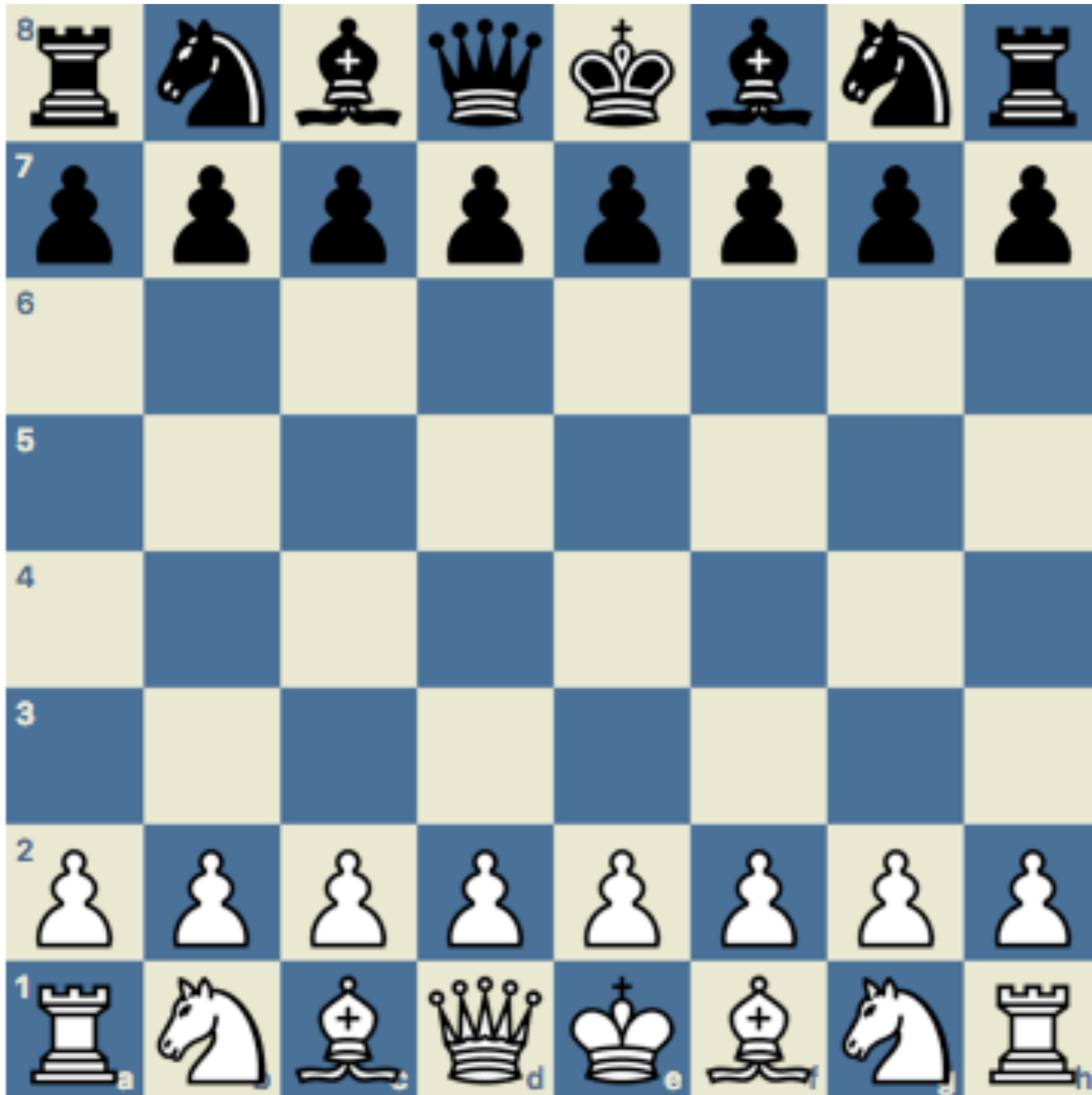


THE ALEKHINE DEFENCE

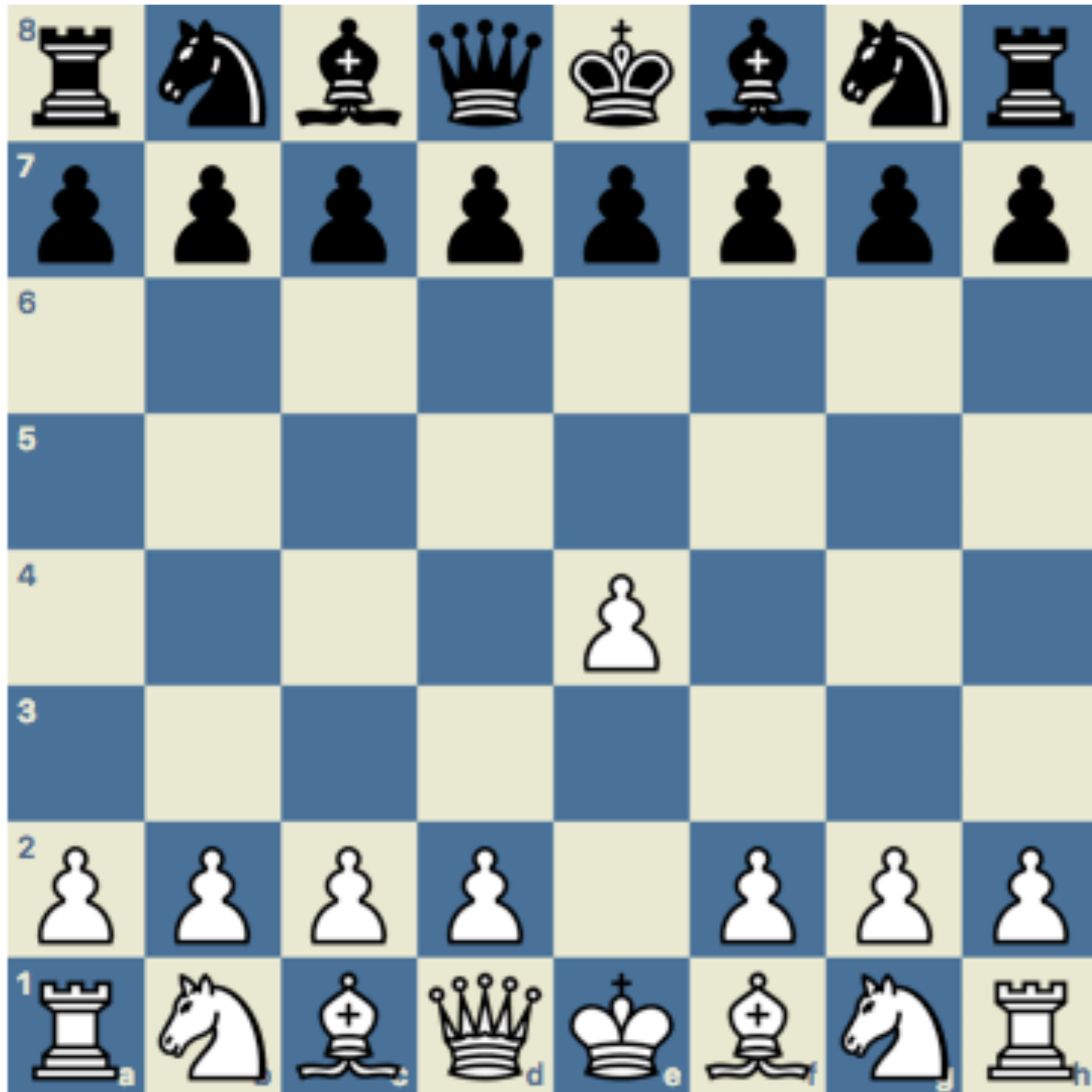
Obviously it was
invented by Alekhine
in 1921. A opening
which leads to many
transpositions.



THE MODERN DEFENCE



THE MODERN DEFENCE



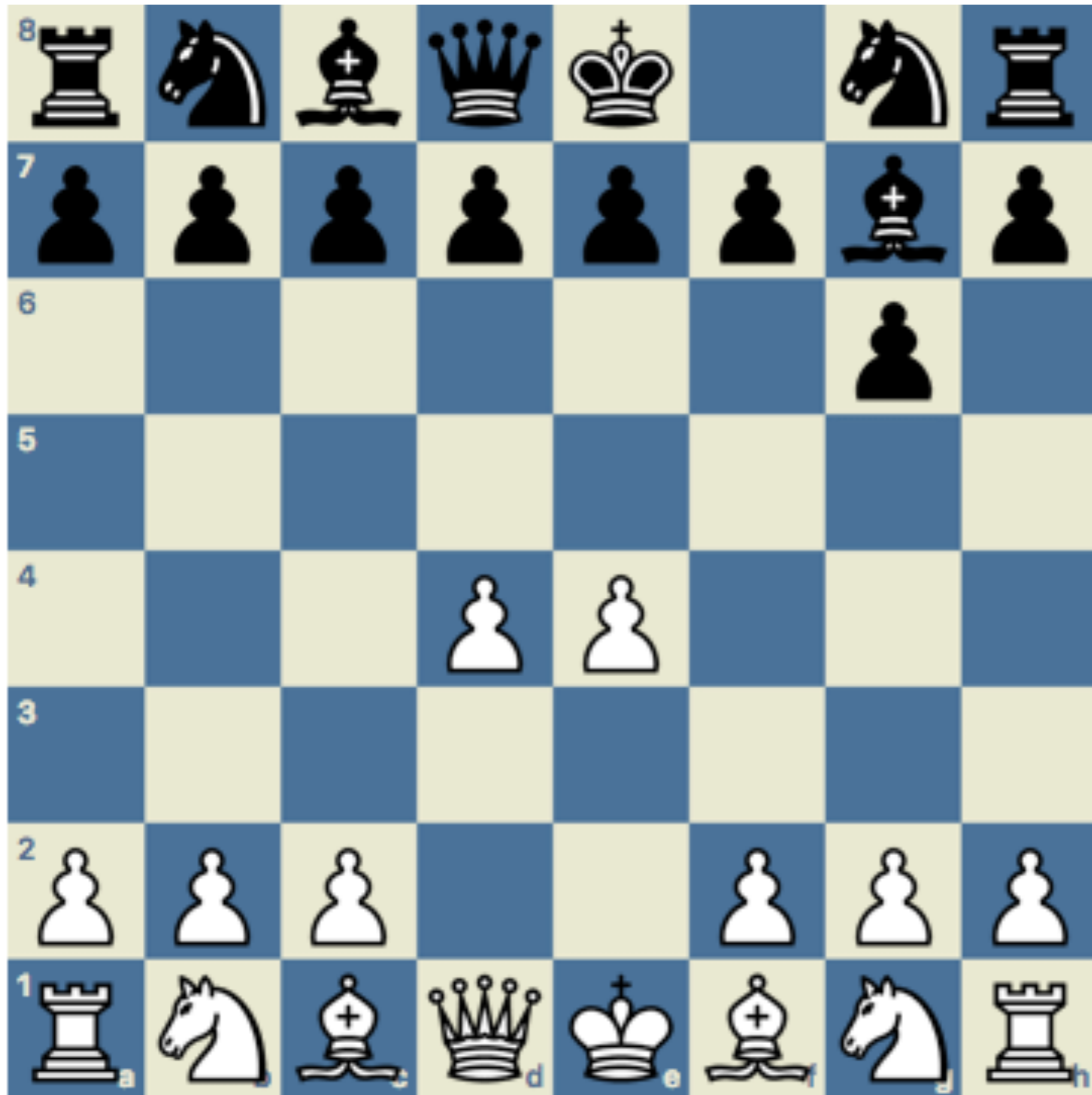
THE MODERN DEFENCE

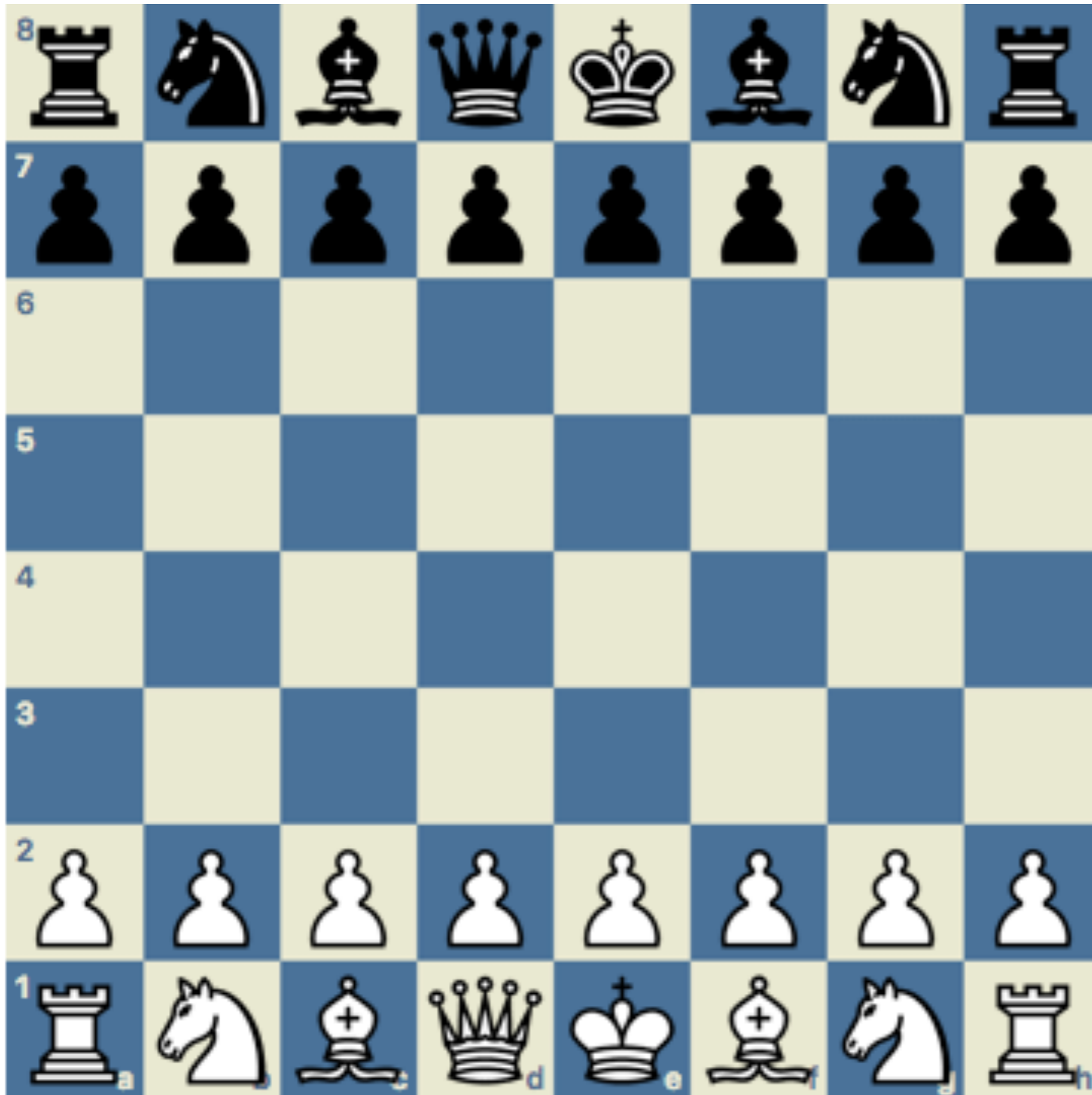


THE MODERN DEFENCE



THE MODERN DEFENCE





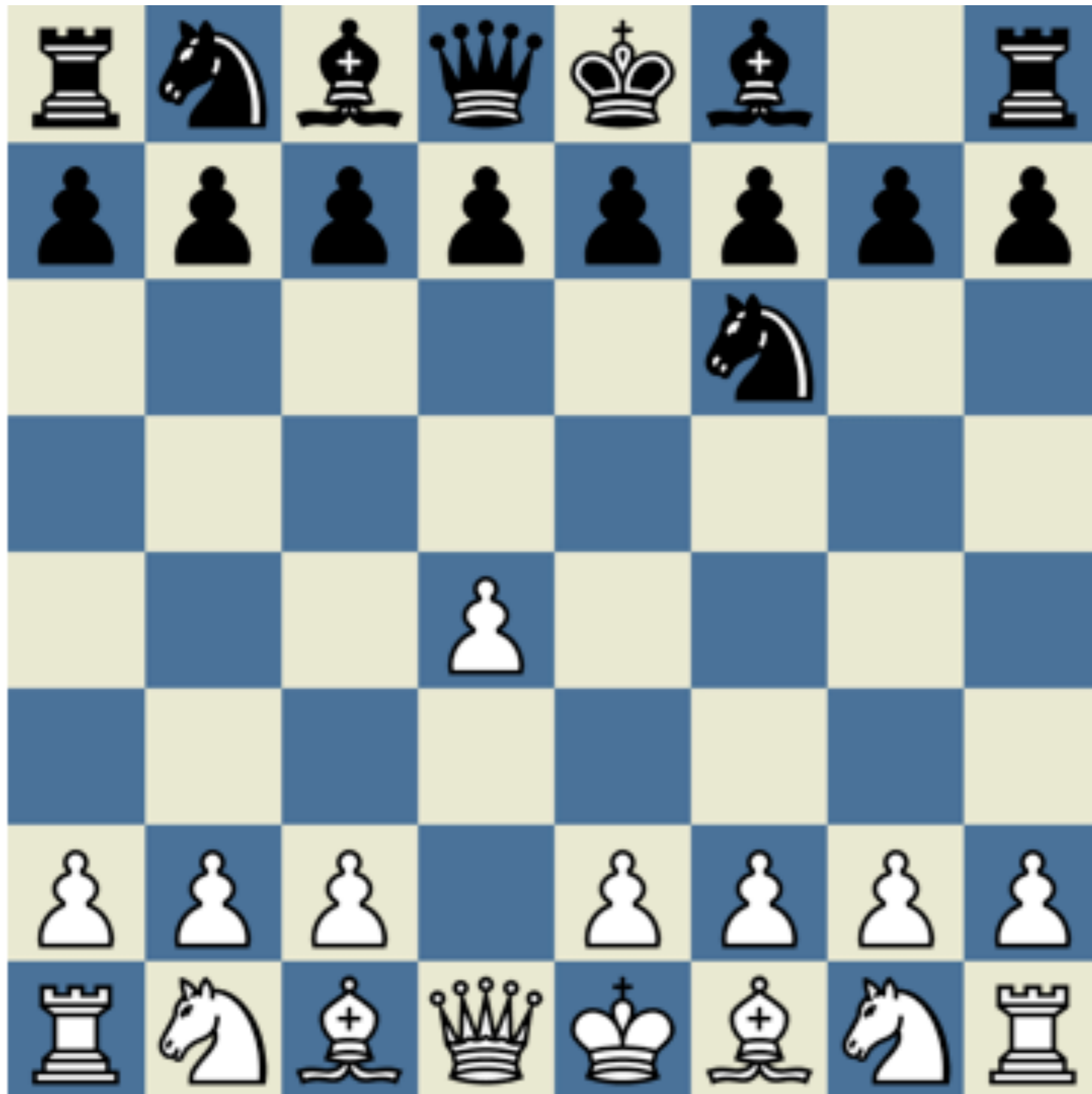
THE KING'S INDIAN DEFENCE

Interesting style of
the bishop and
developed knight
and castled king.
One of the best
chess openings in
history.



THE KING'S INDIAN DEFENCE

Interesting style of
the bishop and
developed knight
and castled king.
One of the best
chess openings in
history.



THE KING'S INDIAN DEFENCE

Interesting style of
the bishop and
developed knight
and castled king.
One of the best
chess openings in
history.



THE KING'S INDIAN DEFENCE

Interesting style of
the bishop and
developed knight
and castled king.
One of the best
chess openings in
history.



THE KING'S INDIAN DEFENCE

Interesting style of
the bishop and
developed knight
and castled king.
One of the best
chess openings in
history.



THE KING'S INDIAN DEFENCE

Interesting style of
the bishop and
developed knight
and castled king.
One of the best
chess openings in
history.



THE KING'S INDIAN DEFENCE

Interesting style of
the bishop and
developed knight
and castled king.
One of the best
chess openings in
history.



THE KING'S INDIAN DEFENCE

Interesting style of
the bishop and
developed knight
and castled king.
One of the best
chess openings in
history.